

The **first and only** chewable ADHD medication in Canada*

CHEW ON THAT!

VYVANSE is available in chewable tablets¹

Flexibility of 6
strawberry-flavoured,
chewable strengths:



Tablets actual size

VYVANSE dose
(d-amphetamine equivalent)

10 mg
(3.0 mg)

20 mg
(5.9 mg)

30 mg
(8.9 mg)

40 mg
(11.9 mg)

50 mg
(14.8 mg)

60 mg[†]
(17.8 mg)

ADHD dosing
(up to 60 mg)

For starting or switching
from another stimulant[‡]

When a dose increase is warranted,
daily dose may be adjusted in
increments of 10 mg or 20 mg at
approximately weekly intervals



Administration considerations:¹

- Take the entire contents of the tablet (do not divide)
- Take chewable tablets in the morning, with or without food
- Avoid taking in the afternoon as it may cause insomnia
- Chew tablet thoroughly before swallowing, with or without food or water
- Capsules can be substituted with chewable tablets on a milligram-per-milligram basis

For more information on dosing and administration, please refer to the Product Monograph.

**A convenient, easy-to-administer dosing option
for your patients with ADHD**

VYVANSE (lisdexamfetamine dimesylate) capsules and chewable tablets are indicated for the treatment of Attention Deficit Hyperactivity Disorder (ADHD) and the treatment of moderate to severe Binge Eating Disorder (BED) in adults. **VYVANSE is not indicated or recommended for weight loss.**

* Based on the information available on the Health Canada Drug Product Database. Comparative clinical significance is unknown.

[†] In patients with severe renal insufficiency, the maximum dose should not exceed 50 mg OD AM. Further dosage reduction should be considered in patients undergoing dialysis.

[‡] Usual starting dose for ADHD is 30 mg OD AM; however, when a lower dose is appropriate, treatment may begin at 20 mg OD AM. OD, once daily.



How to START with

VYVANSE

Administration considerations:¹

- Take the entire contents of the capsule (do not divide)
- Take capsules in the morning, with or without food
- Avoid taking in the afternoon as it may cause insomnia
- If mixing capsule contents with yogurt, water, or orange juice, break apart any compacted powder and consume contents immediately (do not store)

Consult the Product Monograph at www.takeda.com/en-ca/vyvanse-pm for important information on clinical use, contraindications, warnings, precautions, adverse reactions, interactions, and dosing.

The VYVANSE Product Monograph is also available by calling us at 1-800-268-2772.

* Comparative clinical significance is unknown.

† Usual starting dose for ADHD is 30 mg OD AM; however, when a lower dose is appropriate, treatment may begin at 20 mg OD AM.

‡ In patients with severe renal insufficiency, the maximum dose should not exceed 50 mg OD AM. Further dosage reduction should be considered in patients undergoing dialysis.

§ VYVANSE chewable tablets are not available in the 70 mg dose. OD, once daily.

References: 1. VYVANSE Product Monograph. Takeda Canada Inc. July 21, 2020. 2. Health Canada. VYVANSE Notice of Compliance Information. 2009. Available at: <https://health-products.canada.ca/noc-ac/info.do?lang=en&no=10043>. Retrieved January 15, 2020.

VYVANSE offers **once-daily dosing**¹

ADHD dosing
(up to 60 mg)

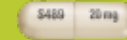
VYVANSE dose
(*d*-amphetamine equivalent)

BED dosing
(up to 70 mg)

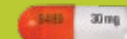
10 mg (3.0 mg)



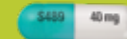
20 mg (5.9 mg)



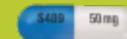
30 mg (8.9 mg)



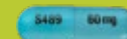
40 mg (11.9 mg)



50 mg (14.8 mg)



60 mg¹ (17.8 mg)



70 mg^{1§} (20.8 mg)



Capsules actual size

For starting or switching from another stimulant[†]

When a dose increase is warranted, daily dose may be adjusted in increments of 10 mg or 20 mg at approximately weekly intervals

For ADHD, the maximum dose should not exceed 60 mg OD AM

Recommended starting dose, to be adjusted in increments of 20 mg at approximately weekly intervals

Recommended target dose range is 50 mg to 70 mg



Takeda Canada Inc.
VYVANSE[®] and the VYVANSE Logo[®] are registered trademarks of Takeda Pharmaceuticals U.S.A., Inc.
TAKEDA[™] and the TAKEDA Logo[®] are trademarks of Takeda Pharmaceutical Company Limited, used under license.
© 2021 Takeda Pharmaceutical Company Limited. All rights reserved.
PRMCDA/CA/Vyv/0018 110053-01-2022-E

